



Gas Industry Co.

Gas Industry Company

Service Report and User Guide

November 2024

Prepared by Jade Operations

jade

| business solutions

www.jadeworld.com

The information contained herein is subject to change without notice. Revisions may be issued advising of such changes and/or additions.

© 2024 Jade Software Corporation Limited.

All rights reserved.

JADE is a trademark of Jade Software Corporation Limited. All trade names referenced are the service mark, trademark, or registered trademark of the respective manufacturer.

Table of Contents

| | |
|---|---|
| Current Service Status | 4 |
| Reporting and Availability SLA Achievement..... | 4 |
| Backup and Recovery Metrics | 6 |
| Database Transactions..... | 6 |
| Database Size (GB) | 7 |
| Service Disruptions | 7 |
| Application Release..... | 7 |
| Maintenance Activities..... | 7 |
| Summary of Change Requests | 8 |
| Licence Usage and Product Support | 8 |
| Application Throughput and Growth..... | 8 |
| Database Growth | 9 |
| Backup Performance..... | 9 |

Current Service Status

Reporting and Availability SLA Achievement

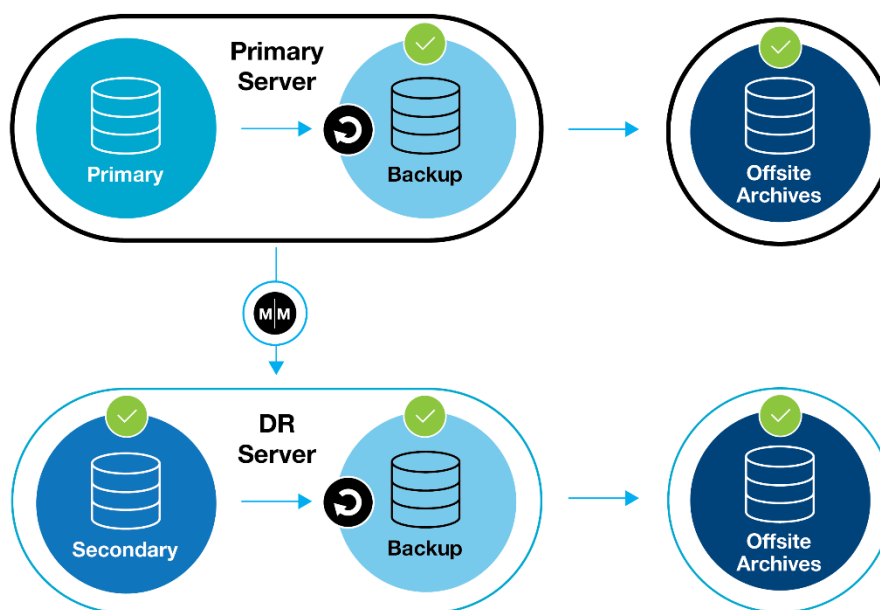
| Requirement | Target | Actual | Met? |
|---|---|------------------------------|------|
| Extended business hours availability [07:00 to 19:30] | >99.5% | 100% | Yes |
| All other hours availability | >98.0% | 99.70% | Yes |
| Unplanned outages | <1 | 0 | Yes |
| Planned outages | <2 | 3 | No |
| Duration of each planned outage | < 2 hours | Yes | Yes |
| Planned outages approved by Gas Industry Co | Yes | Yes | Yes |
| Planned outages scheduled outside extended business hours | Yes | Yes | Yes |
| Internal response time for ICP-based query | >95% of WebViewICPDetails to complete within 1sec | 100% | Yes |
| End user response time for address-based query | >95% of WebAddressSearch to complete within 5sec | 100% | Yes |
| On demand report delivery | < 4 hours of request during extended business hours [7.00 to 19.30] | 5.12 minutes maximum | Yes |
| Standard month end report files completed | By 09:00 on 1st business day of the relevant month | 01 December 2024 00:04:11 | Yes |

Self Review

There were no issues reported this month.

There were more scheduled outages than agreed in the SPA, this exception was agreed prior by Andrew Walker.

Environment & Resilience Overview



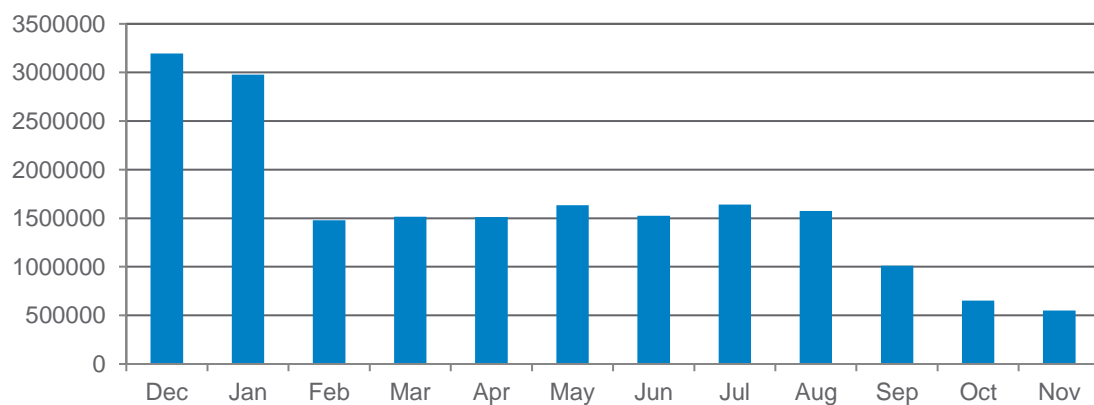
Key

| | | | | | |
|--|-------------------------|--|--------------------|--|------------------|
| | Feature Implemented | | Primary Database | | Offsite archives |
| | Feature not implemented | | Secondary Database | | Mirroring |
| | Local backup | | Backups | | |

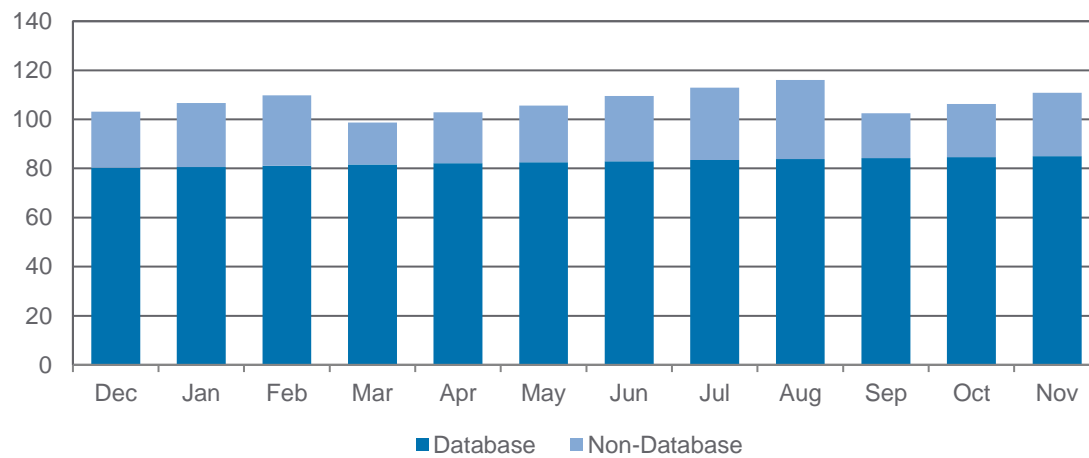
Backup and Recovery Metrics

| Metric | Result | Recommendation |
|--|--------|--|
| There is a hot-standby Disaster Recovery System | ✓ | |
| Backups are taken offsite | ✓ | - |
| At least 14 generations are kept offsite | ✓ | - |
| At least 5 days database journals kept on production server | ✓ | |
| DR cutover tested bi-annually | ✓ | April 2024 Next due November 2024 |
| Offsite system backup recovered and integrity tested monthly | ✓ | Successful 23 November Restore time from source: 0:47 Duration: 3:41 |

Database Transactions



Database Size (GB)



Service Disruptions

| Performance Measure | |
|-------------------------------|------------|
| Availability* | 100% |
| Number of Scheduled Outages | 3 |
| Number of Unscheduled Outages | 0 |
| Last Unscheduled Outage | April 2024 |

*Availability measure excludes pre-approved scheduled outages

Application Release

| Day | Ref | Detail | Duration | Authoriser |
|-----|---------|--------------|----------|------------|
| 17 | 1165968 | Release 2.30 | 0:09 | A. Walker |

Maintenance Activities

| Day | Ref | Detail | Duration | Authoriser |
|-----|---------|--------------------|----------|------------|
| 9 | 1160205 | DR Takeover to CHC | 0:42 | A. Walker |
| 16 | 1165356 | DR Takeover to AKL | 1:24 | A. Walker |

Summary of Change Requests

| Day | Ref | Detail | Status |
|-----|-----|--------|--------|
| - | - | - | - |

Server Patch Status

Patches are tested against the standard Jade Care tools and OS configurations, and are distributed in a controlled sequence with customer production servers being the last in the distribution cycle.

Non-critical patches are held for distribution until such time as a critical patch is released, at which point all outstanding patches are applied.

There are no patches outstanding

Licence Usage and Product Support

Full support is available for the installed releases.

| Environment | Installed Release | Current Release | Licence Entitlement | Minimum Available |
|-------------|-------------------|-----------------|---------------------|-------------------|
| GICPREG | Jade 22.0.02 | Jade 22.0.04 | 70 | 5 |
| GICUREG | Jade 22.0.02 | Jade 22.0.04 | - | - |

Application Throughput and Growth

| Transaction name | This Month | Last Month | Percentage Change |
|------------------|------------|------------|-------------------|
| All Transactions | 551,304 | 653,692 | -16% |

Database Growth

| Class | This Month | Last Month | Change |
|--------------|----------------|----------------|--------------|
| Database | 87,056 | 86,706 | 350 |
| Non-database | 26,374 | 22,123 | 4,251 |
| Total | 113,430 | 108,829 | 4,601 |

Backup Performance

| Backup Type | Run days | Run Time | Expected Duration | Failed this Period |
|-------------|----------|----------|-------------------|--------------------|
| Disk | ALL | 19:00 | 00:40 | 2 |
| Tape | ALL | 05:00 | 02:00 | 0 |