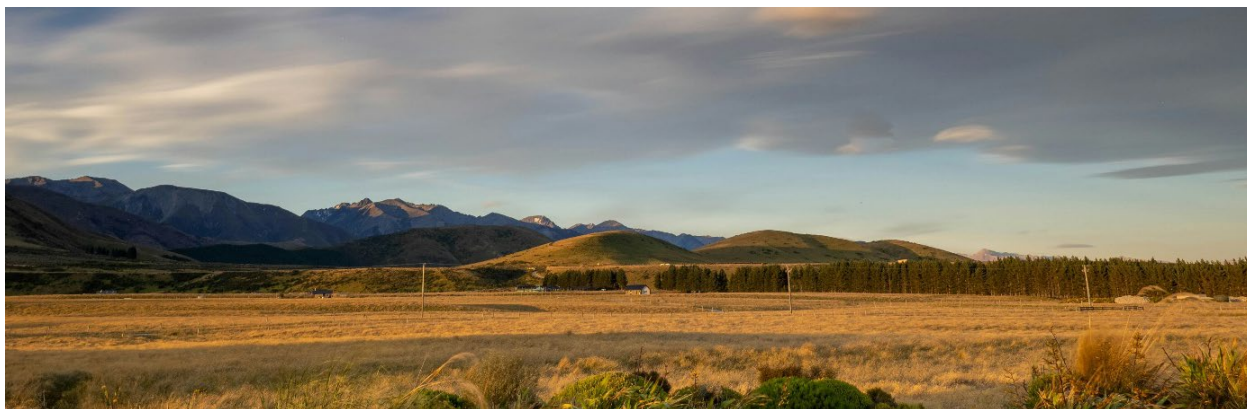




Gas Industry Co.



## News Bulletin 30 January 2026

### Kia ora

Welcome to the first News Bulletin for 2026.

In this bulletin:

- [Reminder: Consultation on the Gas Industry Co FY2027 Work Programme and Levy - closes Monday 9 February](#)
- [Proposal to update 2026 national average emissions factor for natural gas – consultation now open](#)
- [Gas Information Exchange Protocols – Operational review closing](#)
- [Critical Contingency Operator \(CCO\) annual exercise and industry training session](#)
- [Reminder: Outage Information Disclosure Rules](#)

---

## Reminder: Consultation on the Gas Industry Co FY2027 Work Programme and Levy - closes Monday 9 February

The proposed FY2027 work programme and associated levy industry participants will pay, is currently out for consultation. You can read the [Consultation Paper here](#).

Our co-regulatory model relies on industry input to develop our annual work programme and associated levy. This Consultation Paper takes into consideration feedback from the Co-regulatory Forum held in November 2025, which generally supported the proposals presented. You can read the slides from the [Co-regulatory Forum](#) here.

Please send submissions to [consultations@gasindustry.co.nz](mailto:consultations@gasindustry.co.nz) by 5.00pm, Monday 9 February.

---

## Proposal to update 2026 national average emissions factor for natural gas – consultation now open

The Minister of Climate Change would like your feedback on updating the 2026 national average emissions factor for natural gas in the NZ ETS regulations, to better estimate the average emissions intensity of supplied natural gas.

The emissions factor is listed in regulation 50(7) of the *Climate Change (Stationary Energy and Industrial Processes) Regulations 2009*. It is a weighted average of data in 2025 NZ ETS emissions returns from gas miners.

The current emissions factor does not include gas supplied to the Kapuni Gas Treatment Plant due to its high CO<sub>2</sub> content. It also disregards sales of LPG. The revised emissions factor is therefore considered a better estimate of the average emissions intensity of supplied natural gas. It is proposed that the revised emission factor apply retrospectively from the start of 2026.

The current and revised value for the emissions factor for natural gas is as follows:

	Current value	Revised value
National average emissions factor for natural gas	59.03 tCO <sub>2</sub> e/TJ	53.71 tCO <sub>2</sub> e/TJ

Please send any questions and your feedback to [etsconsultations@mfe.govtnz](mailto:etsconsultations@mfe.govtnz) by 5.00pm Tuesday 10 February.

---

## Gas Information Exchange Protocols – Operational review closing

This is your last opportunity to provide feedback before proposed voluntary Gas Information Exchange Protocols are finalised.

The deadline for providing operational feedback on the drafted voluntary Gas Information Exchange Protocols is **Friday 27 February**.

The proposed protocols were sent to industry participants in December 2025. If you have not received a copy of the protocols and would like to review them, please email us at [info@gasindustry.co.nz](mailto:info@gasindustry.co.nz).

Learn more about the current and proposed [Gas Information Exchange Protocols](#) on our website.

## Electricity Information Exchange Protocol 14 (EIEP14)

In the electricity market, EIEP14 is a voluntary protocol that allows retailers to respond to requests from third parties for information about their generally available tariff plans. We are aware that work is currently underway to regulate this protocol.

As there is currently no voluntary protocol to cover retailer tariff plans in the gas market, we plan to undertake a mini-consultation to determine the most appropriate approach to align with this work.

---

## Critical Contingency Operator (CCO) annual exercise and industry training session

This year's annual CCO exercise will be held on Wednesday 13 May 2026.

We will advise you when the Participants' Brief for the exercise is available on the CCO website, with further details and instructions on how to participate.

The CCO will run a training session on the CCM Regulations prior to the exercise, in late April/early May. Invitations will be sent out by the CCO once the date has been confirmed.

---

## Reminder: Outage Information Disclosure Rules

### Annual Monitoring Disclosures and Certificates due in April

Gas producers and gas storage owners are required to provide Gas Industry Co with their annual outage information disclosures and certificate of correctness by **Wednesday 15 April**.

The *Gas (Facilities Outage Information Disclosure) Rules 2022* provide for effective and timely disclosure of information regarding a planned or unplanned outage at a gas production facility or a gas storage facility, for all gas and related market participants.

You can access the specified certificate and read more about the [Outage Information Disclosure](#) rules and required information on our website.

Please provide the required information to Gas Industry Company at [info@gasindustry.co.nz](mailto:info@gasindustry.co.nz).

Gas Industry Co  
PO Box 10 646, Wellington 6140  
+64 4 472 1800

[info@gasindustry.co.nz](mailto:info@gasindustry.co.nz)  
[www.gasindustry.co.nz](http://www.gasindustry.co.nz)