

Gas Allocation Agent

Monthly Report | November 2019



The key activities were performed by the Gas Allocation Agent (GAA) in accordance with the specific requirements in the Allocation Agent Service Provider Agreement (the 'SPA')

Key Events

- Due to an error with the new notional gas gate configuration (GWP20102), the initial allocation for **October 2019** was republished under **rule 44.3**.

1.1. Overview

Stage	Month - Published	Total UFG (GJ)	Previous UFG (GJ)	Change
Initial	Oct-19	52,124	26,562	78%
2nd Initial	Oct-19	34,679	52,124	-50%
Interim	Jul-19	40,051	48,462	-21%
Final	Oct-18	31,809	37,248	-17%

¹Allocation stage, consumption month and date of publication, total UFG is UFG for all allocated gas gates in gigajoules (GJ), Previous UFG is the total UFG from the most recent allocation for the relevant consumption month (Note: for the initial allocation, the Previous UFG will be the Total UFG from the initial allocation for the month preceding the month being allocated).

2. Initial Allocation Results

2.1. Gas Gates where UFG is +/- 2000 GJ

Gas Gate	UFG (GJ)	Gas Gate	UFG (GJ)
BEL24510	4,458	GTH11301	2,809
EGC30701	-3,296	GTW06910	2,094
GTA03610	20,308	TWA35610	5,219

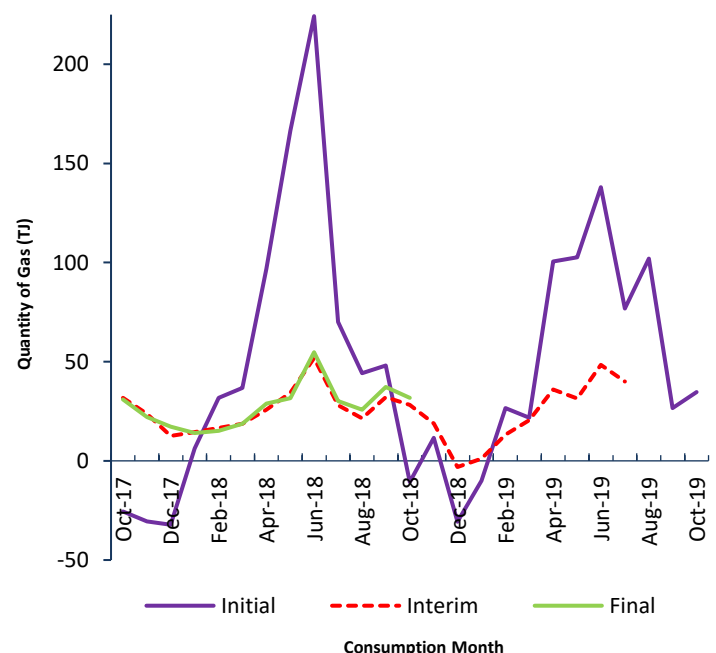
2.2. Large UFG Gas Gates Changes

Gas gates where UFG has changed by +/- 2000 GJ or more since the previous consumption month

Gas Gate	Sep-19 Initial UFG (GJ)	Oct-19 Initial UFG (GJ)	Difference (GJ)
ASH34301	-25	4,458	4,482
BEL24510	4,430	816	-3,614
DRU15101	-1,943	816	2,760
EGC30701	-6,831	816	7,647
FLB15601	947	-3,296	-4,243
GTA03610	15,119	-397	-15,515
GTW06910	1,953	-397	-2,350
HUN15302	110	20,308	20,198
HWA20801	633	2,809	2,176
KAP12901	2	2,094	2,092

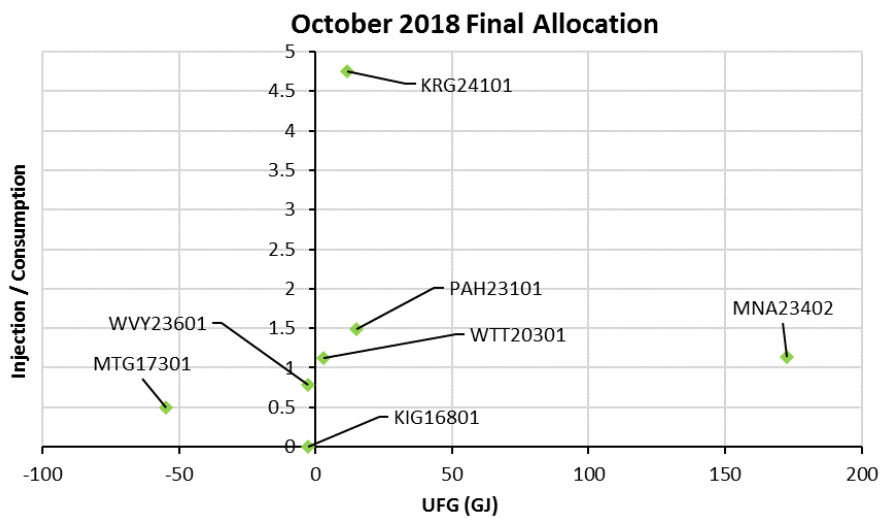
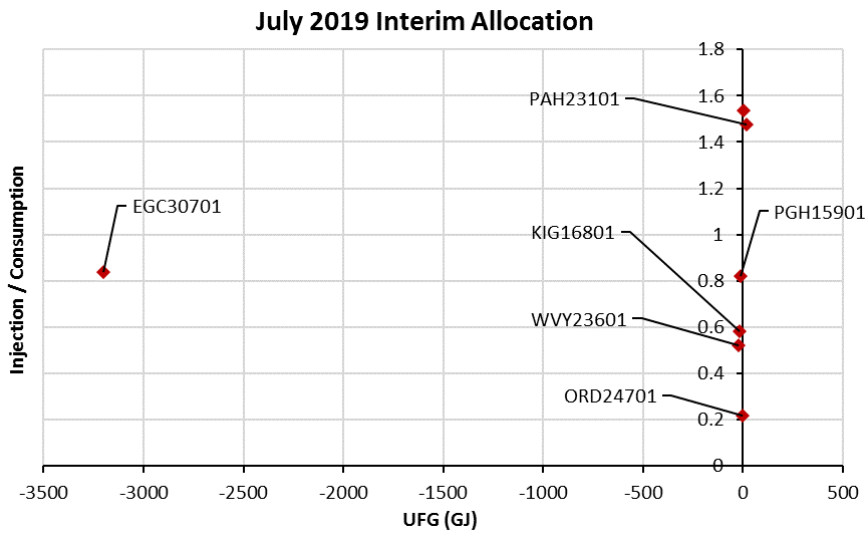
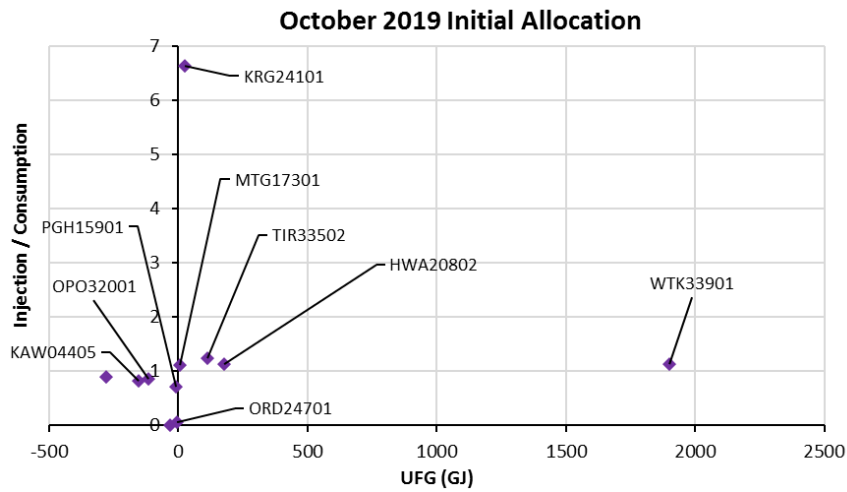
3. Allocation Results

3.1. Total UFG by Allocation Stage | 24 Months



3.2. Injection/Consumption²

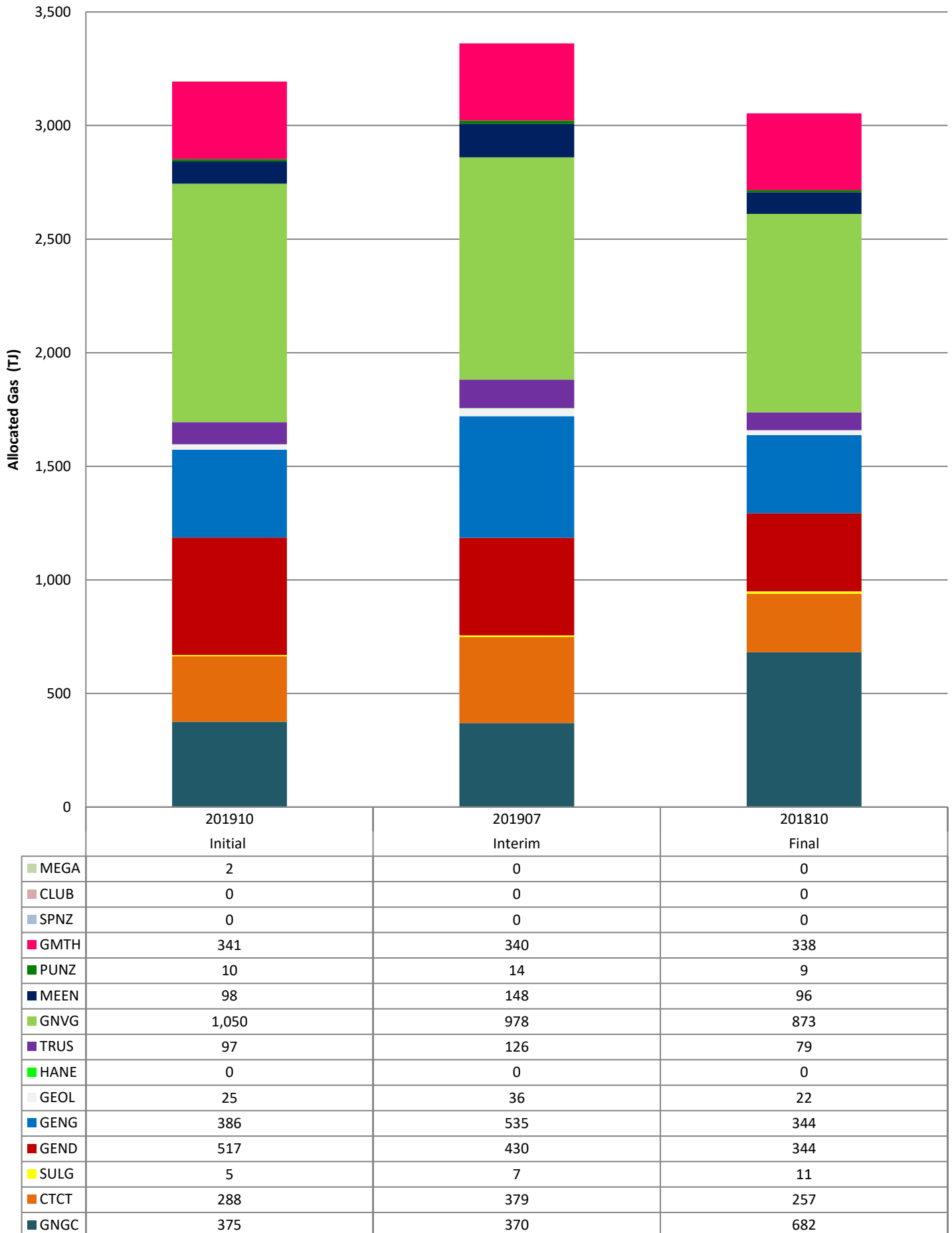
All gas gates with an injection / consumption ratio over 1.1 or less than 0.9 (1d.p)



²The Injection / Consumption graphs note any gas gates where injection submissions are significantly higher, or lower, than consumption, as well as those that have high UFG for the allocation month.

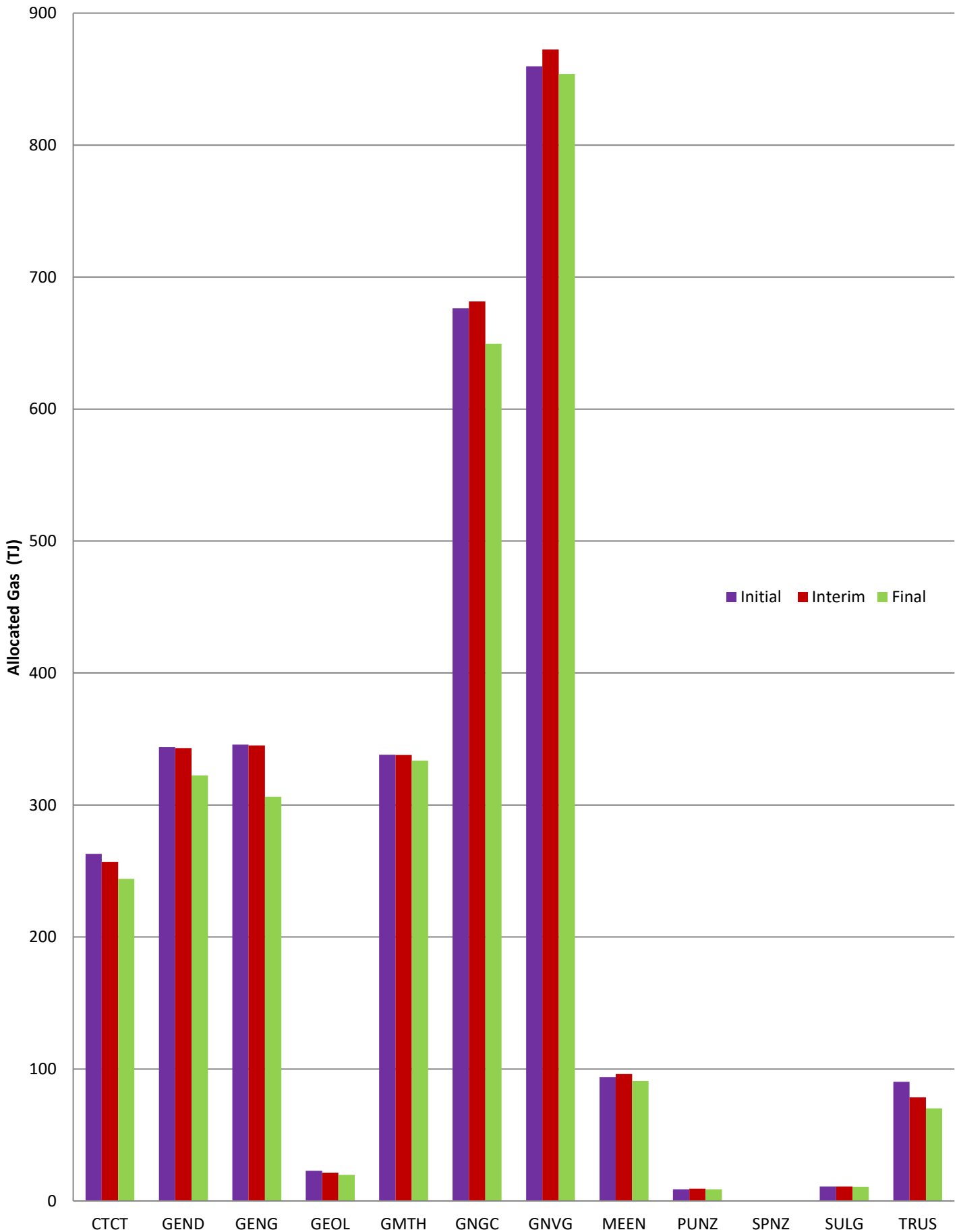
4. Allocation Aggregated Results

There were 15 gas retailers who were allocated gas across the **INITIAL**, **INTERIM** and **FINAL** allocations as indicated below.



5. Final Allocation Period

Change in allocated gas by retailer for the **October 2018** allocation period

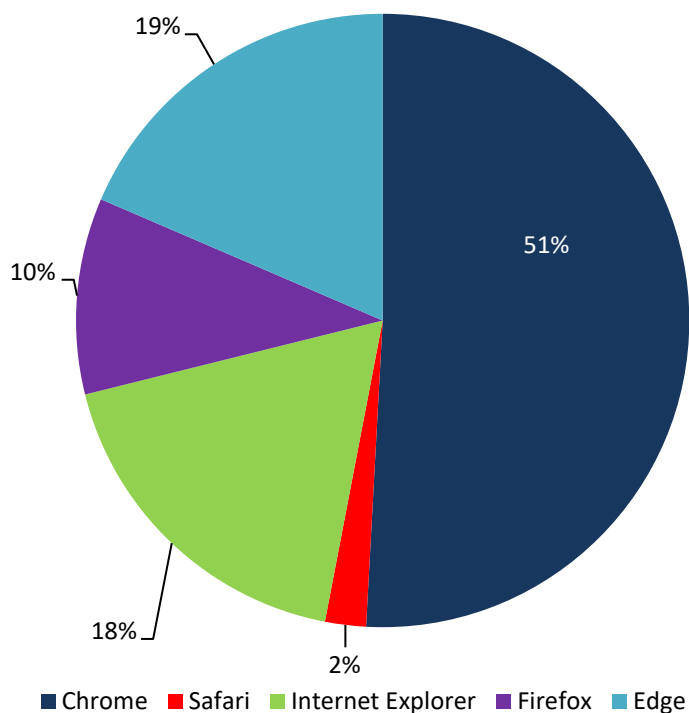


6. Service Provider Performance

6.1. EMS GAA Compliance Performance

Allocation System Performance	Metric	Status
All sampled transactions must have a response time of less than 30 seconds	Average 1.58 seconds [over the internet]	✓
Number of transactions with response time greater than 30 seconds	0	✓
99% of all sampled transactions must have a response time of less than 4 seconds	Not Achieved – 98%	✓
95% of all sampled transactions must have a response time of less than 2 seconds	Achieved	✓
The System must upload any one consumption file in less than 30 seconds	Achieved	✓
Average concurrent (simultaneous) sessions across month:	0.0231	✓
Max (non-concurrent) sessions in a single hour	18	✓
Record number and details of service provider breaches	0	✓
Record number and details of retailer breaches	0	✓
System availability (must not be unavailable for >90 mins per month)	100% available	✓
System back-up requirements met	Achieved	✓
System DB size	69.82 GB	
System Security Breaches	Nil	✓

6.2. Browser Access for NOVEMBER 2019



6.3. Gas Retailers

The graph below indicates the number of active portal users and the number of Gas Retailers in the last 12 months.

