

DAWG MEETING #13

DATE:

6 December, 2017



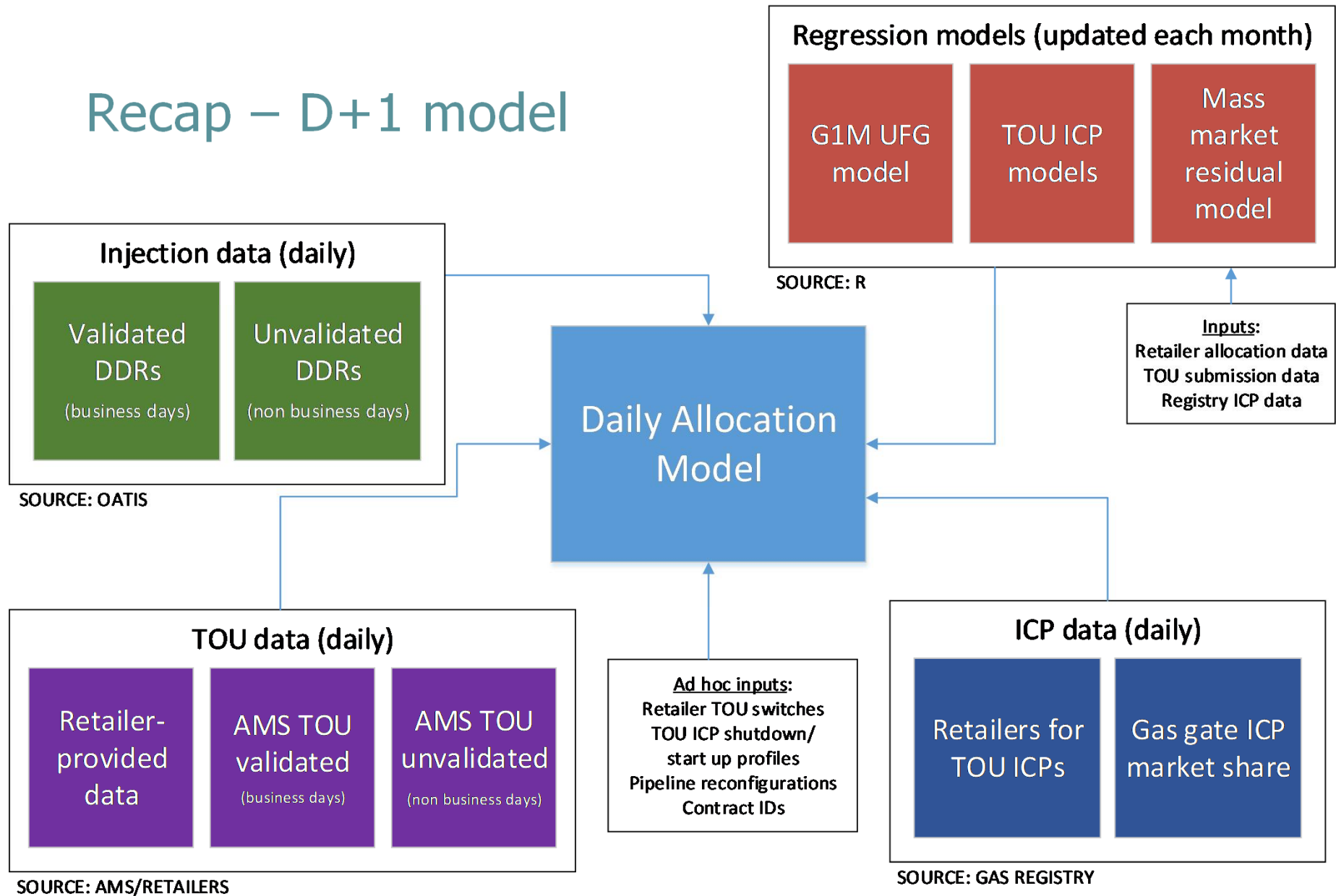
Disclaimer...

Agenda

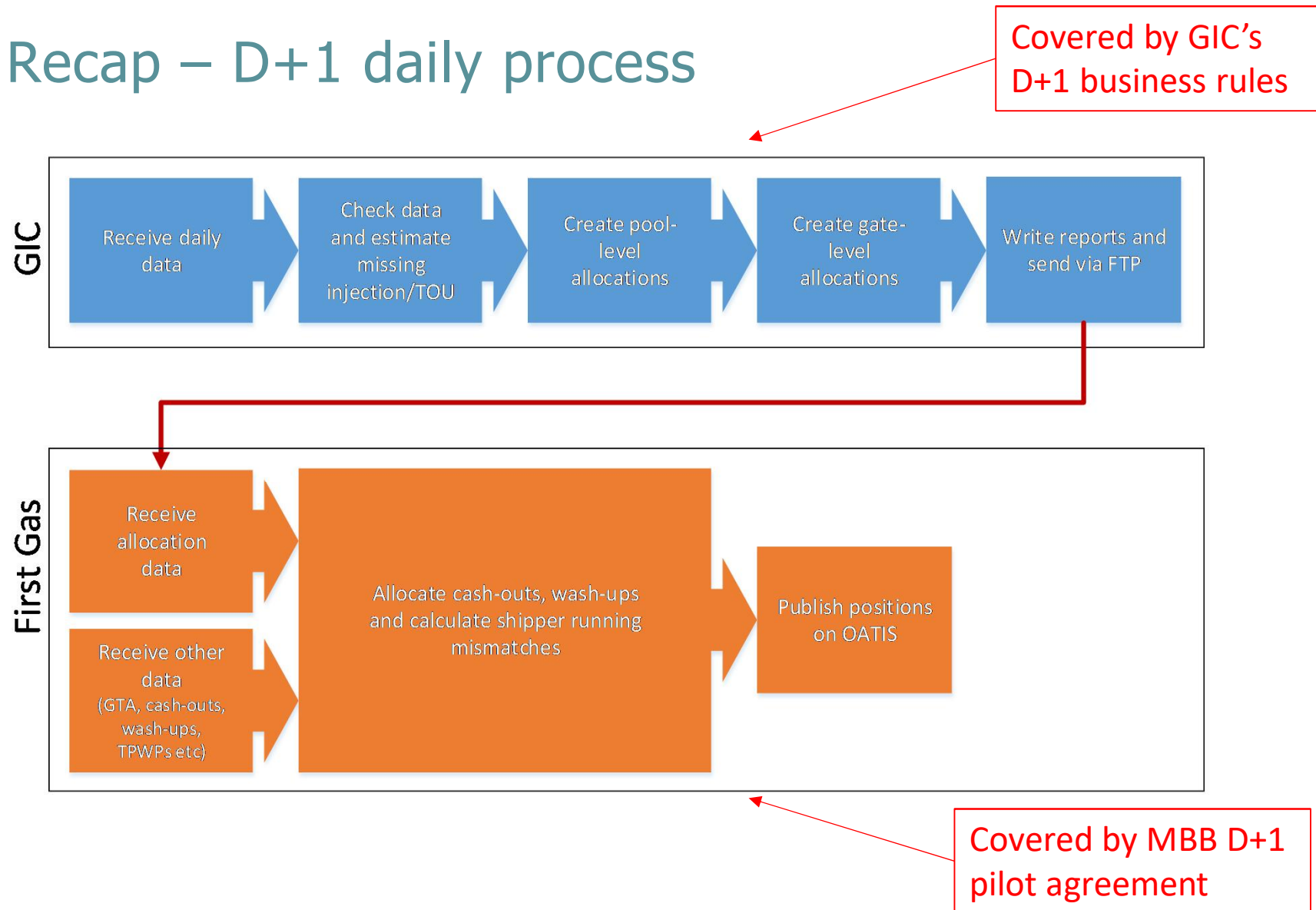
- Recap of what the D+1 model does & current daily process
- What's different under the proposed GTAC
- Impact on operational process
- Impact on 'contractual' process
- Anything to discuss on FG memo?
- Next steps/timeline/action points

Recap of D+1 model and processes

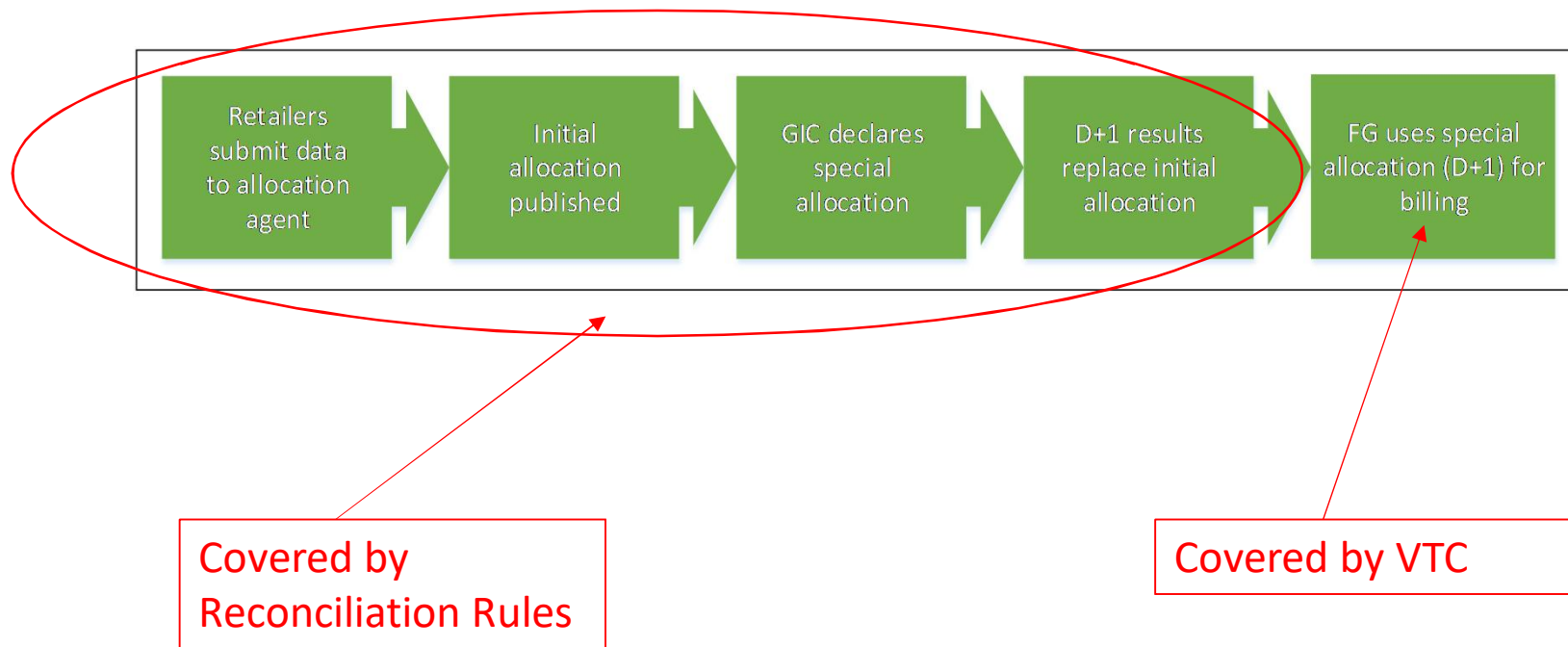
Recap – D+1 model



Recap – D+1 daily process



Recap – D+1 month-end process



What's different under the proposed GTAC?

GTAC proposals

	Status quo	GTAC proposal
Balancing	Pool level	System level
Cash-outs	Daily (if WP tolerance exceeded)	Only when required
Capacity booking	Annual	Daily
Capacity booking level	Gas gate	Delivery zone
Frequency of D+1	Business days	Every day
Backstop arrangements	Declare non business day if no D+1	Use scaled DNC if no D+1

Impact on operational process

Impact on operational process

- Current D+1 model is optimised for pool level results as it was designed to assist shippers with the transition to MBB
- Could keep the existing model if shippers only need a system level allocation. What do shippers (and First Gas) want?
- Suggestions for D+1 2.0 are
 - Allocate at gas gate level and aggregate to delivery zone level
 - Use TOU plus gate market share from previous initial (option 5 in previous analysis)
 - Remove mass market residual regression model
 - Remove pool-to-gate algorithm
 - More simple model => more robust for a seven day operation
- Basic process remains the same (inputs, allocations, outputs)

Box plot analysis

Box plots show distribution of daily errors when compared against interim:

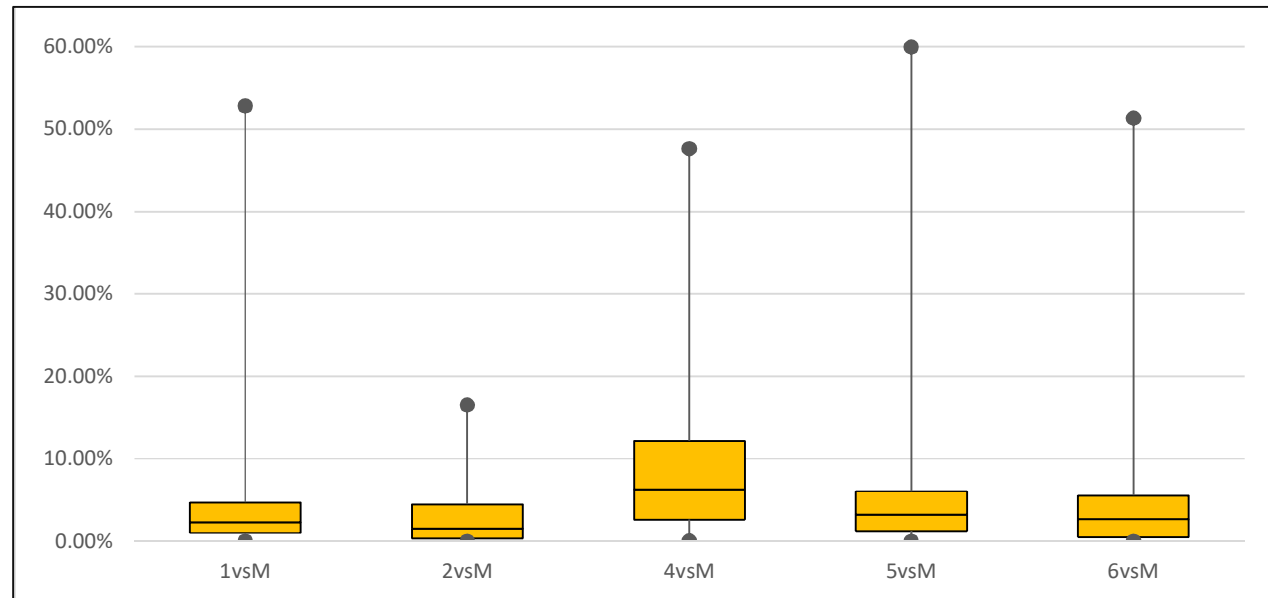
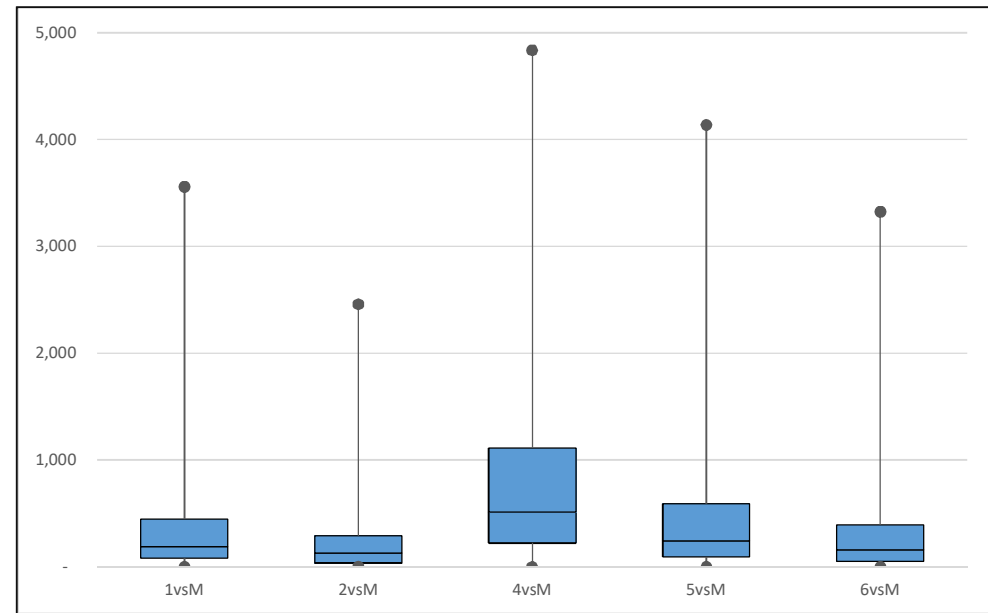
1vsM = current D+1

2vsM = initial allocation

4vsM = market share only

5vsM = TOU & mkt share

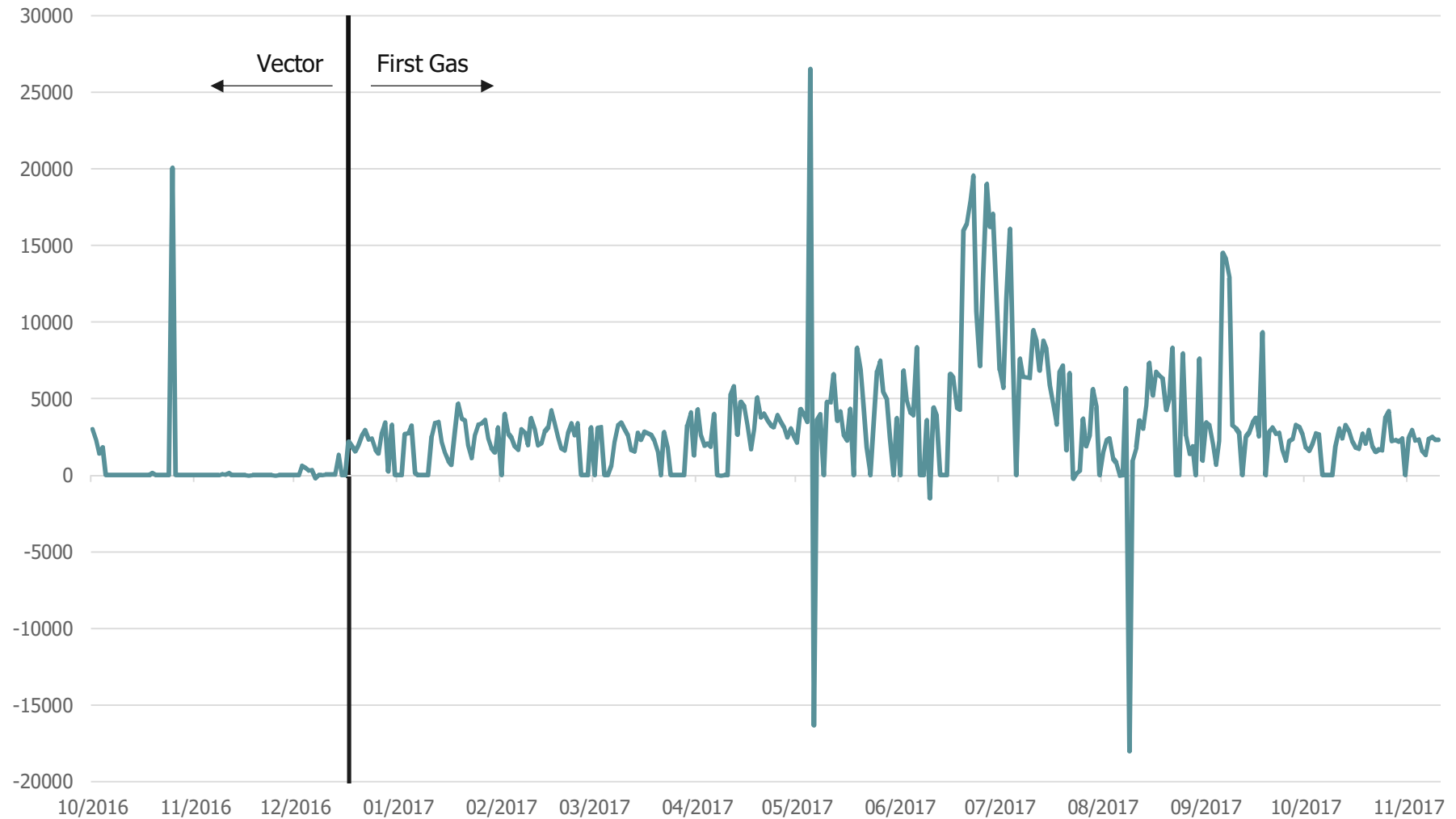
6vsM = all TOU on telemetry



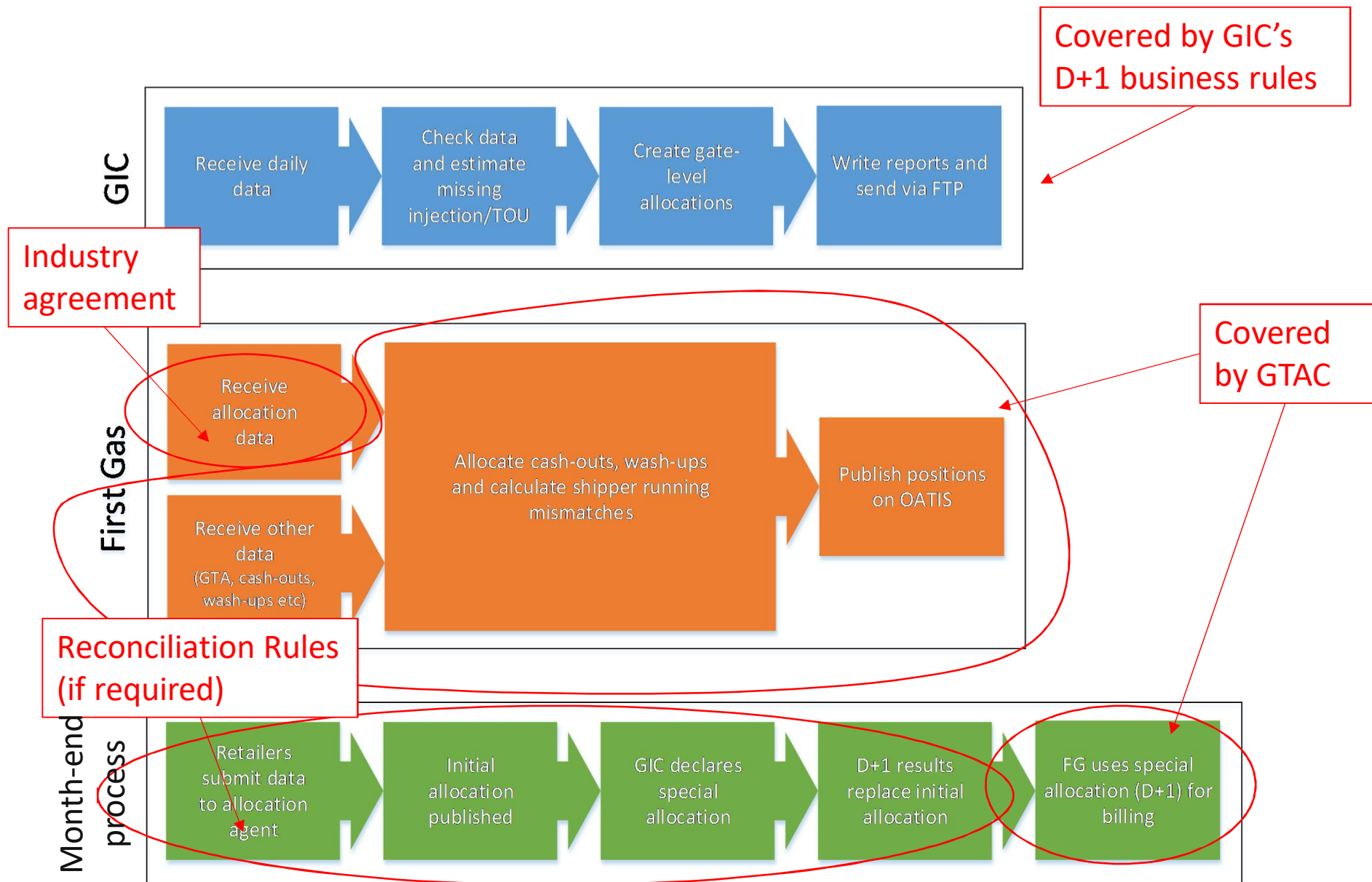
Impact on operational process (II)

- Latest GTAC drafting has frequency of publication of DDRs:
- *For Metering that First Gas monitors by telemetry (including SCADA), as soon as practicable and not later than (on the next Day after a Day)*
 - *Unvalidated data by 1000; and*
 - *Validated data by 1200*
- Raises some questions:
 - Will the validation process itself change?
 - Can D+1 be run earlier in the day?
 - What proportion of delivery points don't have telemetry?
 - Can we use unvalidated data for remainder of delivery points?
 - What does this mean for customer TOU data?

11:20 run v 14:20 run



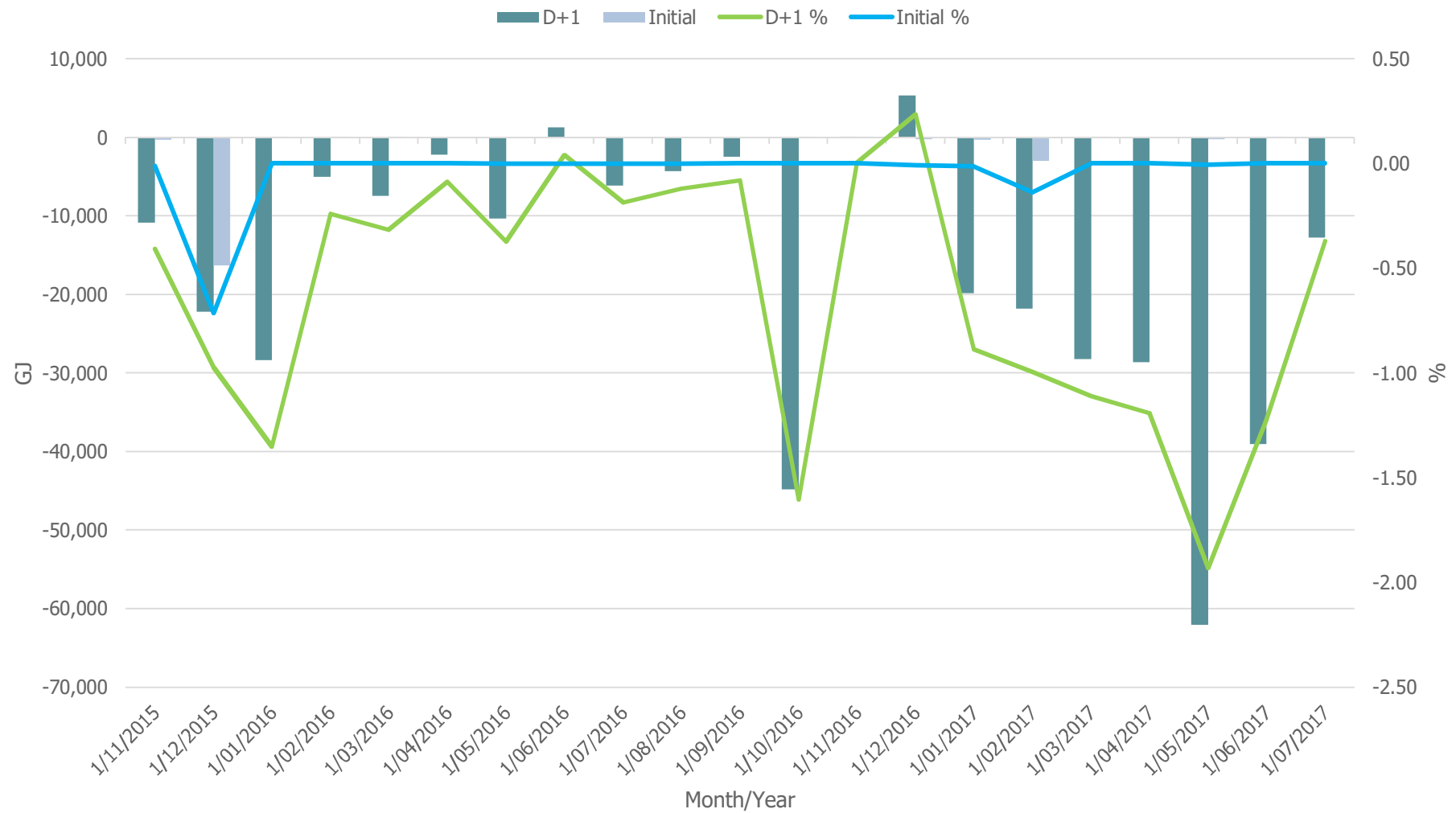
Impact on contractual process



Anything to discuss on FG memo?

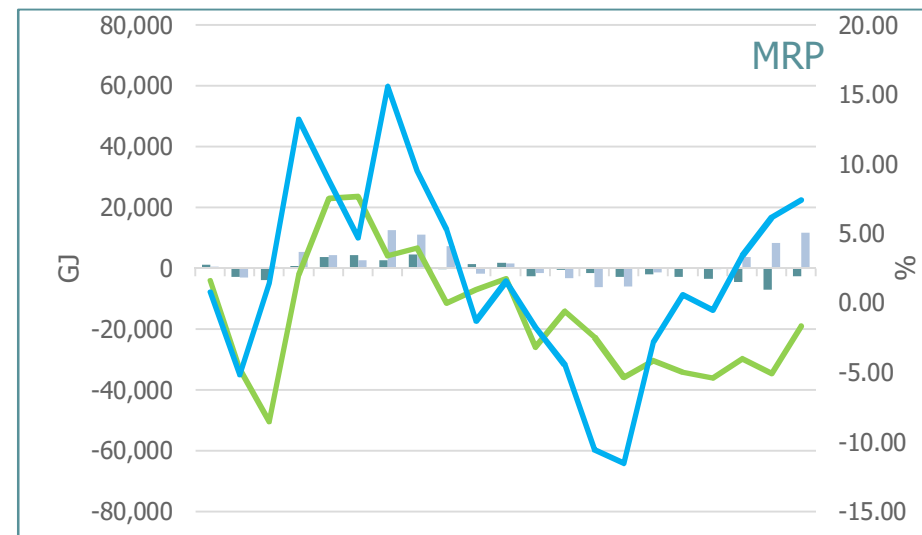
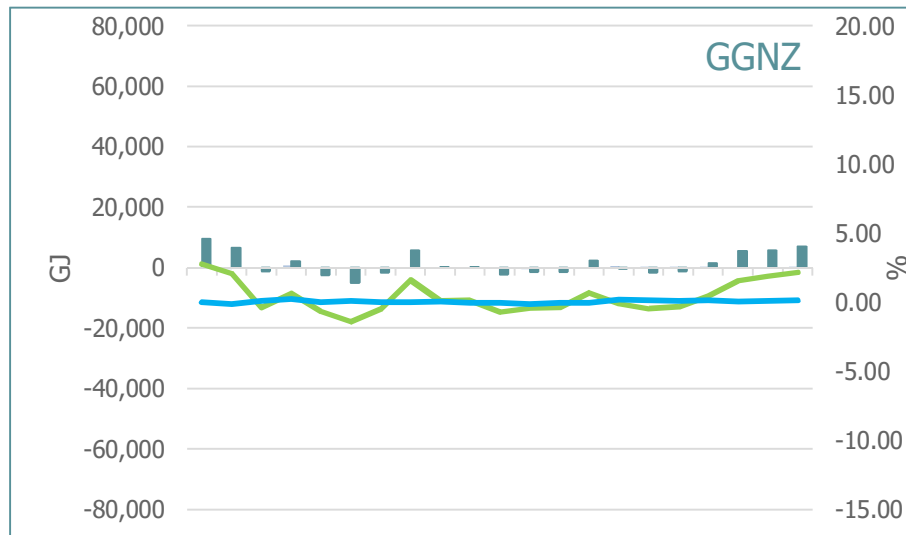
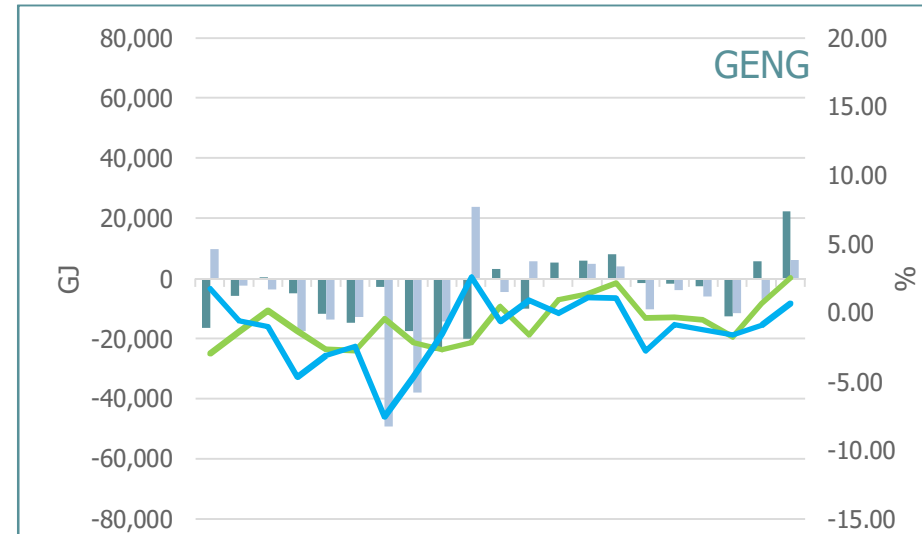
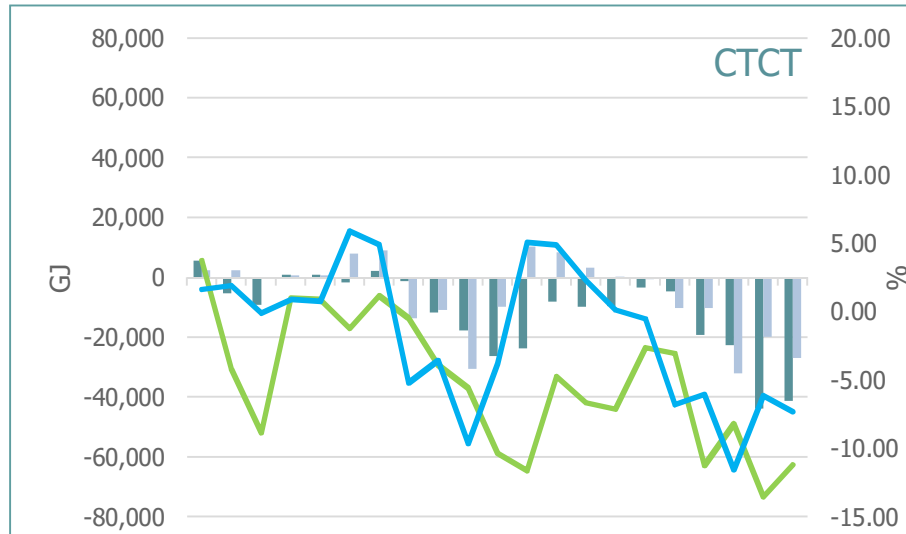
Next steps/timeline/action points

D+1 and Initial v Interim



D+1 and Initial v Interim

■ D+1 ■ Initial — D+1 % — Initial %



D+1 and Initial v Interim

■ D+1 ■ Initial — D+1 % — Initial %

