

Gas Allocation Agent

Monthly Report | February 2018



The key activities were performed by the Gas Allocation Agent (GAA) in accordance with the specific requirements in the Allocation Agent Service Provider Agreement (the 'SPA')

Key Events

1.1. Overview

| Stage ¹ | Month - Published | Total UFG (GJ) | Previous UFG (GJ) | Change |
|--------------------|-------------------|----------------|-------------------|--------|
| Initial | Jan-18 | 6,274 | -32,209 | 613% |
| Interim | Oct-17 | 31,771 | -25,532 | 180% |
| Final | Jan-17 | 15,647 | 16,315 | -4% |

¹Allocation stage, consumption month and date of publication, total UFG is UFG for all allocated gas gates in gigajoules (GJ), Previous UFG is the total UFG from the most recent allocation for the relevant consumption month (Note: for the initial allocation, the Previous UFG will be the Total UFG from the initial allocation for the month preceding the month being allocated).

2. Initial Allocation Results

2.1. Gas Gates where UFG is +/- 2000 GJ

| Gas Gate | UFG (GJ) | Gas Gate | UFG (GJ) |
|----------|----------|----------|----------|
| BEL24510 | 2,633 | TWA35610 | -2,540 |
| GMM08001 | 2,027 | TWB24810 | -2,811 |

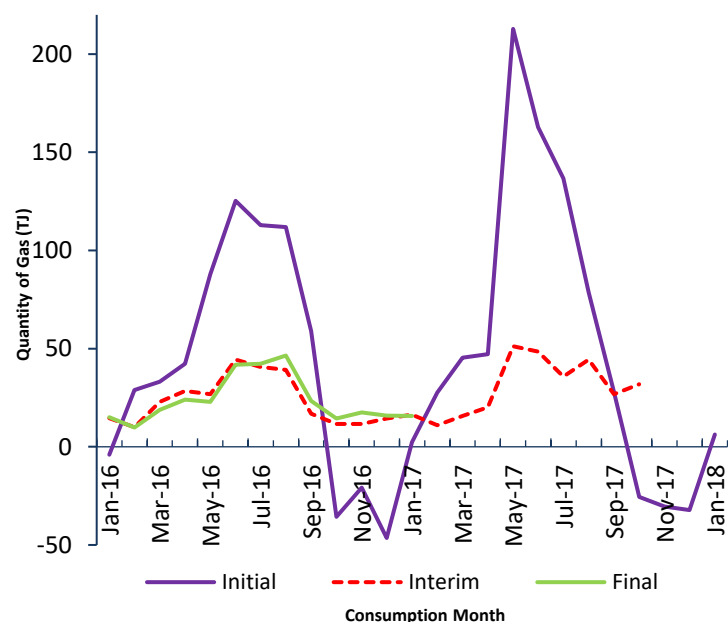
2.2. Large UFG Gas Gates Changes

Gas gates where UFG has changed by +/- 2000 GJ or more since the previous consumption month

| Gas Gate | Oct-17 Initial UFG (GJ) | Nov-17 Initial UFG (GJ) | Difference (GJ) |
|----------|-------------------------|-------------------------|-----------------|
| BEL24510 | -510 | 2,633 | 3,143 |
| GIS07810 | -3,290 | -948 | 2,342 |
| GTA03610 | -10,570 | 829 | 11,399 |
| GTH11301 | -3,990 | 1,172 | 5,162 |
| PLN24201 | -5,080 | 1,554 | 6,634 |
| TUK06502 | 9,417 | -121 | -9,538 |
| TWA35610 | -6,094 | -2,540 | 3,554 |

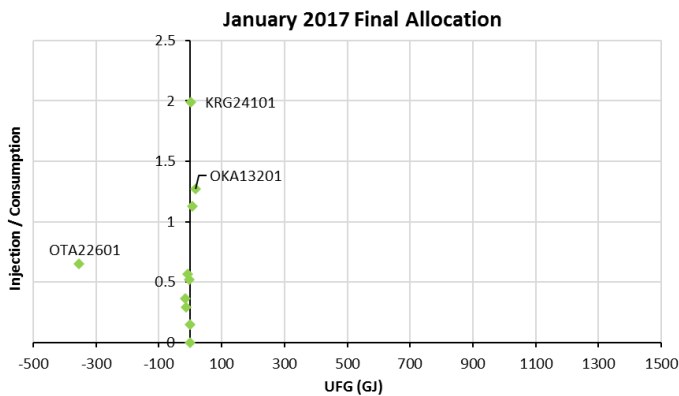
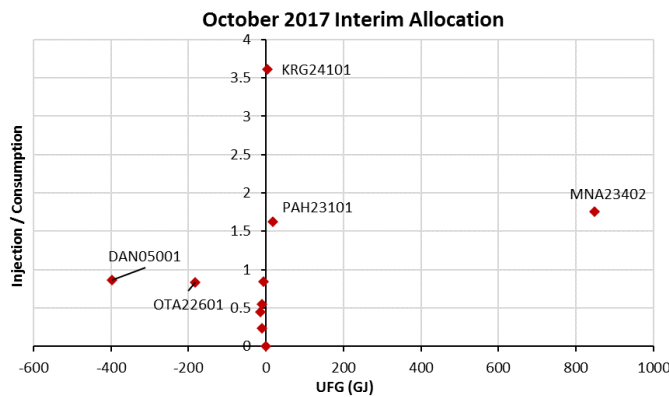
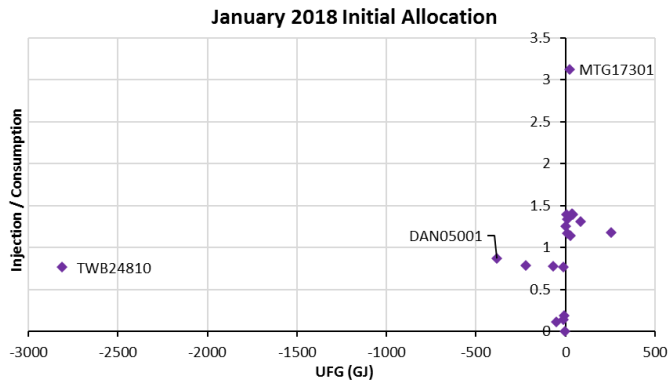
3. Allocation Results

3.1. Total UFG by Allocation Stage | 24 Months



3.2. Injection/Consumption²

All gas gates with an injection / consumption ratio over 1.1 or less than 0.9 (1d.p)

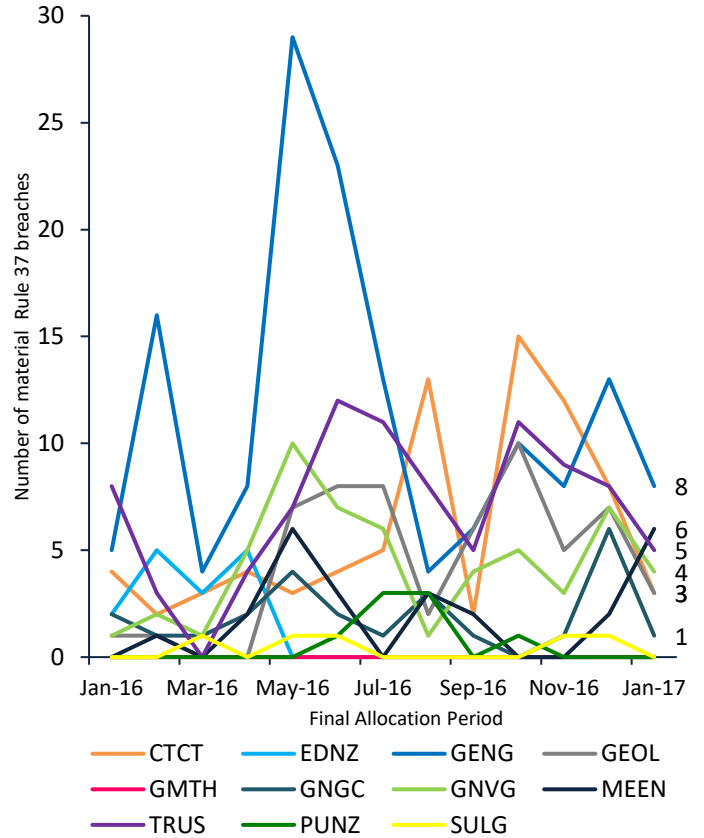


²The Injection / Consumption graphs note any gas gates where injection submissions are significantly higher, or lower, than consumption, as well as those that have high UFG for the allocation month.

4. Rule and Obligation Compliance

4.1. Participant Rule Compliance³

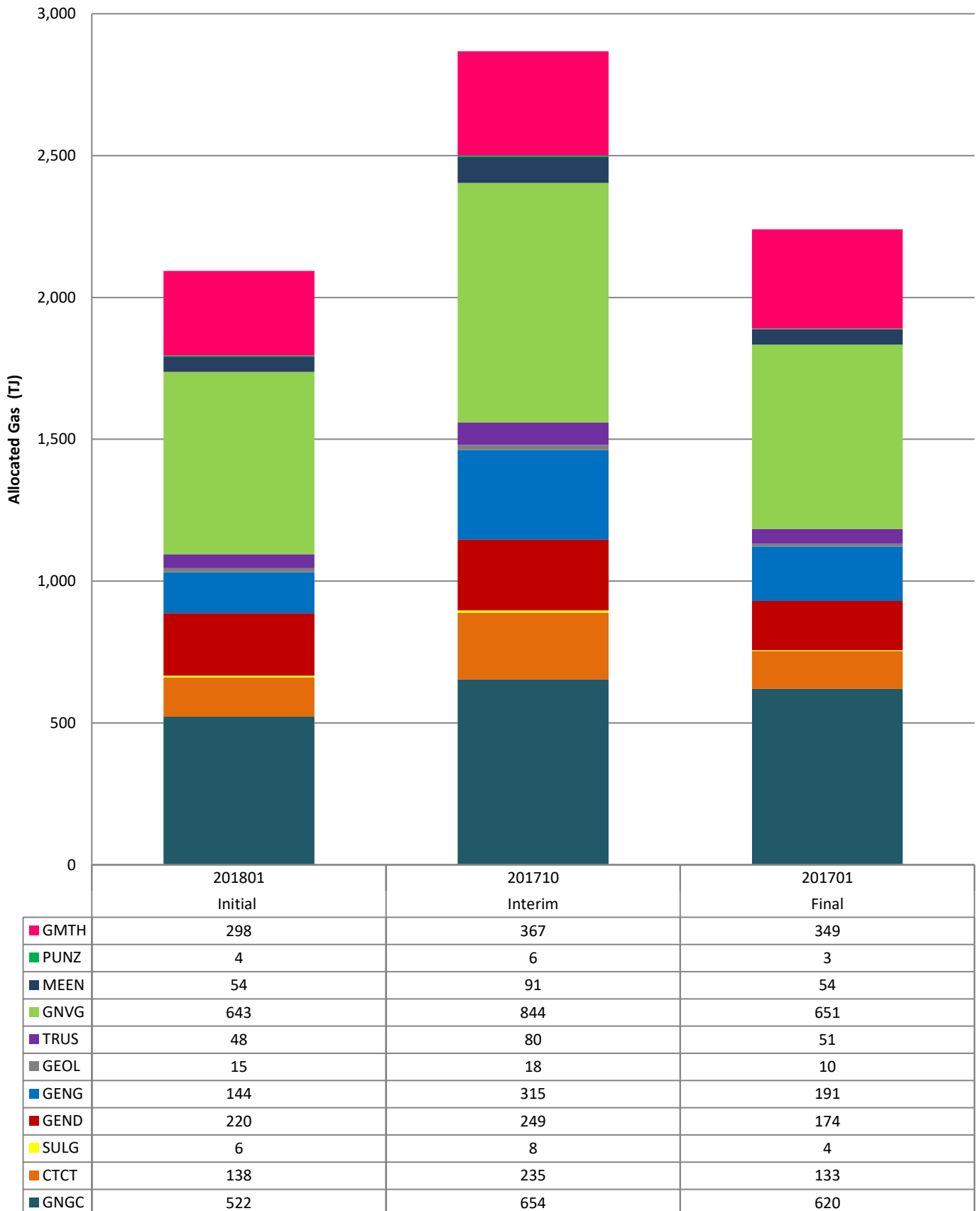
The graph below indicates the number of material rule 37 breaches in the last 12 months.



³ Rule 37 is the difference between initial and final submissions and the last column is any other alleged rule breaches

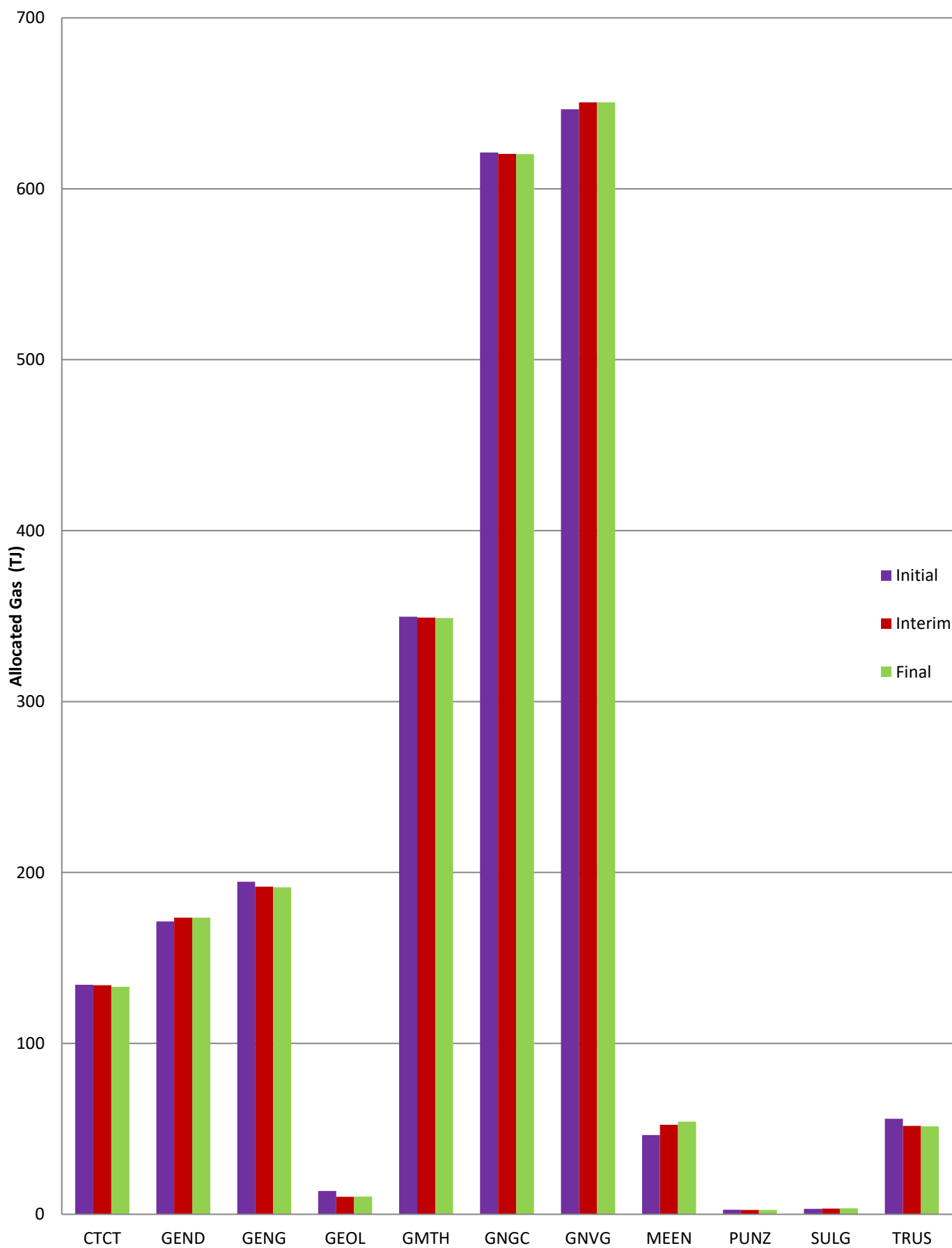
5. Allocation Aggregated Results

There were 11 gas retailers who were allocated gas across the **INITIAL**, **INTERIM** and **FINAL** allocations as indicated below.



6. Final Allocation Period

Change in allocated gas by retailer for the **JANUARY 2017** allocation period

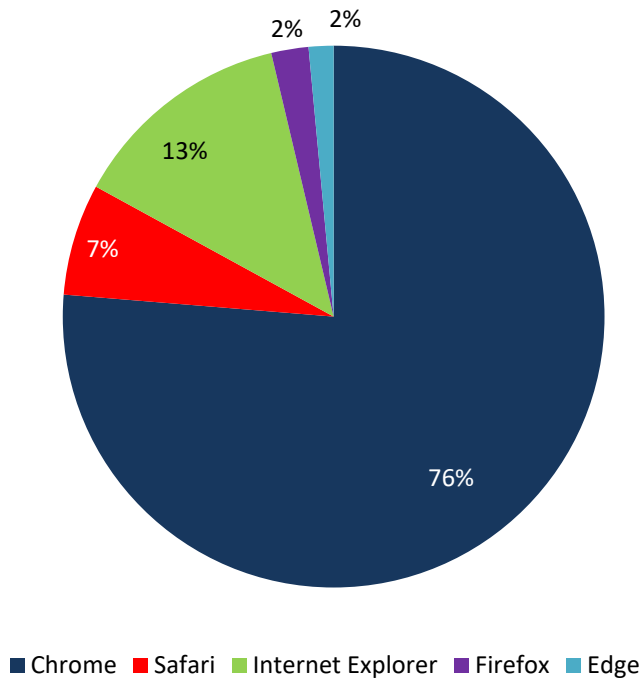


7. Service Provider Performance

7.1. EMS GAA Compliance Performance

| Allocation System Performance | Metric | Status |
|--|----------------------|--------|
| All sampled transactions must have a response time of less than 30 seconds | Average 1.13 seconds | ✓ |
| Number of transactions with response time greater than 30 seconds | nil | ✓ |
| 99% of all sampled transactions must have a response time of less than 4 seconds | Achieved | ✓ |
| 95% of all sampled transactions must have a response time of less than 2 seconds | Achieved | ✓ |
| The System must upload any one consumption file in less than 30 seconds | Achieved | ✓ |
| Average concurrent (simultaneous) sessions across month: | 0.005 | ✓ |
| Max (non-concurrent) sessions in a single hour | 5 | ✓ |
| Record number and details of service provider breaches | 0 | ✓ |
| Record number and details of retailer breaches | 0 | ✓ |
| System availability (must not be unavailable for >90 mins per month) | 100% available | ✓ |
| System back-up requirements met | Achieved | ✓ |
| System DB size | 64.2 GB | |
| System Security Breaches | Nil | ✓ |

7.2. Browser Access for February 2017



7.3. Gas Retailers

The graph below indicates the number of active portal users and the number of Gas Retailers in the last 12 months.

