

# Gas Allocation Agent

Monthly Report | May 2018



The key activities were performed by the Gas Allocation Agent (GAA) in accordance with the specific requirements in the Allocation Agent Service Provider Agreement (the 'SPA')

## 1.1. Overview

Stage <sup>1</sup>	Month - Published	Total UFG (GJ)	Previous UFG (GJ)	Change
Initial	Apr-18	36,856	31,731	14%
Interim	Jan-18	12,572	-32,209	356%
Final	Apr-17	15,776	15,744	0%

<sup>1</sup>Allocation stage, consumption month and date of publication, total UFG is UFG for all allocated gas gates in gigajoules (GJ), Previous UFG is the total UFG from the most recent allocation for the relevant consumption month (Note: for the initial allocation, the Previous UFG will be the Total UFG from the initial allocation for the month preceding the month being allocated).

## 2. Initial Allocation Results

### 2.1. Gas Gates where UFG is +/- 2000 GJ

Gas Gate	UFG (GJ)	Gas Gate	UFG (GJ)
BEL24510	10,191	GTW06910	3,394
FLD03001	3,503	NPL12101	3,594
GIS07810	2,152	PLN24201	4,917
GMM08001	3,094	TWA35610	13,473
GTA03610	24,966	WAG21501	3,760
GTH11301	6,618	WTR12001	2,622

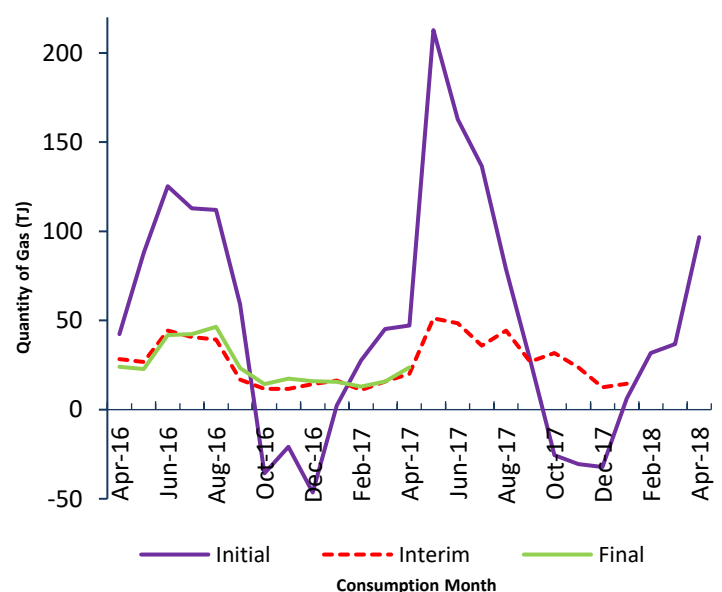
## 2.2. Large UFG Gas Gates Changes

Gas gates where UFG has changed by +/- 2000 GJ or more since the previous consumption month

Gas Gate	Mar-18 Initial UFG (GJ)	Apr-18 Initial UFG (GJ)	Difference (GJ)
BEL24510	4,807	10,191	5,384
FLD03001	660	3,503	2,843
GTA03610	7,134	24,966	17,833
NPL12101	929	3,594	2,665
ORD24701	-136	1,866	2,001
PLN24201	1,848	4,917	3,070
TWA35610	6,301	13,473	7,172
WAG21501	862	3,760	2,898

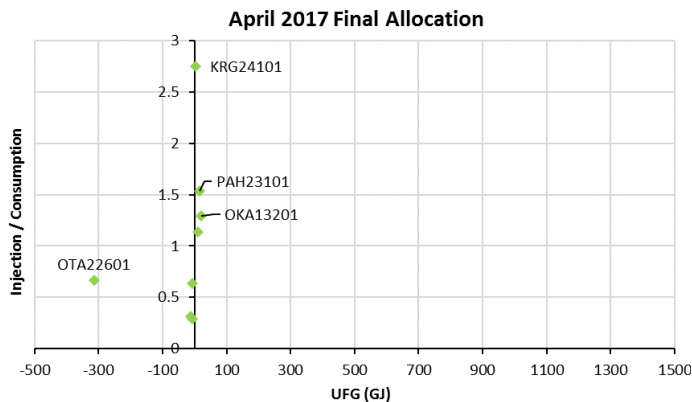
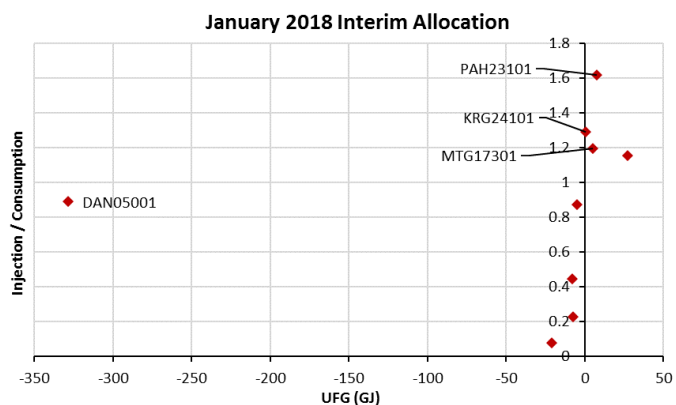
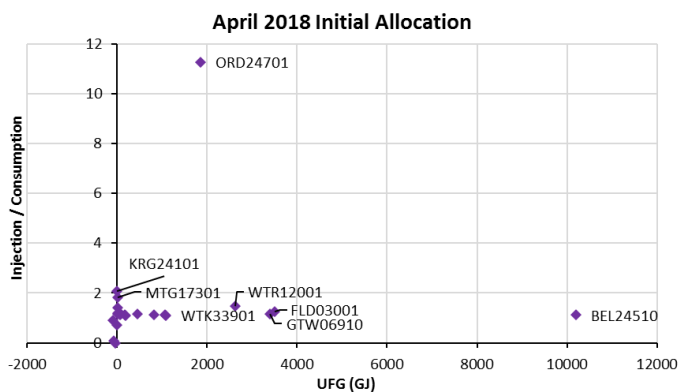
## 3. Allocation Results

### 3.1. Total UFG by Allocation Stage | 24 Months



### 3.2. Injection/Consumption<sup>2</sup>

All gas gates with an injection / consumption ratio over 1.1 or less than 0.9 (1d.p)

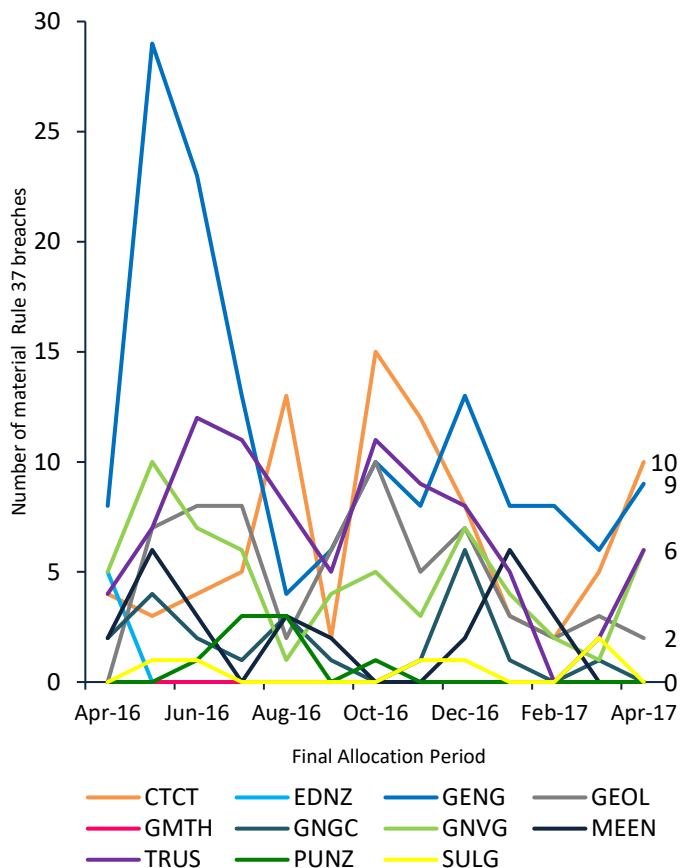


<sup>2</sup>The Injection / Consumption graphs note any gas gates where injection submissions are significantly higher, or lower, than consumption, as well as those that have high UFG for the allocation month.

### 4. Rule and Obligation Compliance

#### 4.1. Participant Rule Compliance<sup>3</sup>

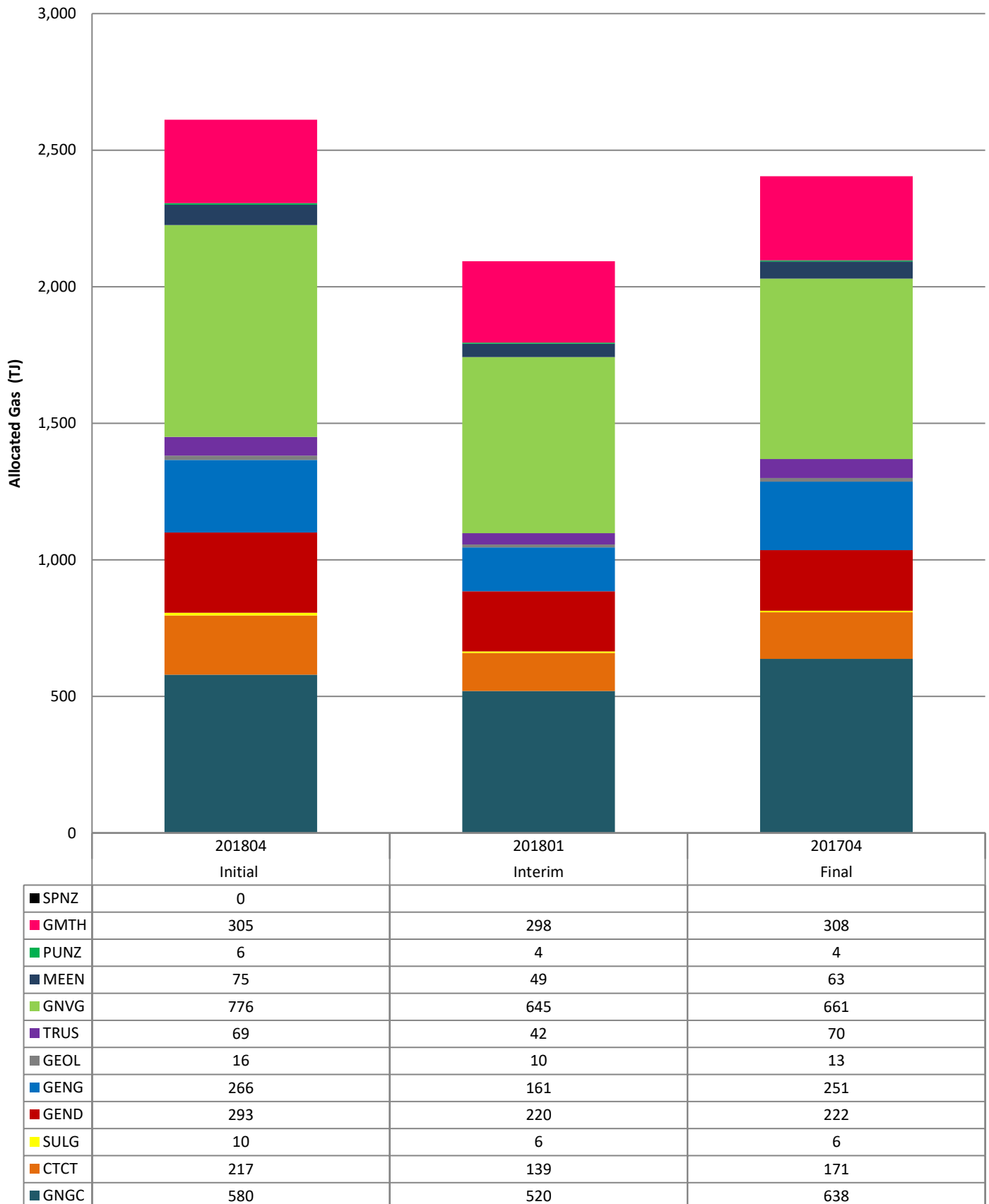
The graph below indicates the number of material rule 37 breaches in the last 12 months.



<sup>3</sup> Rule 37 is the difference between initial and final submissions and the last column is any other alleged rule breaches

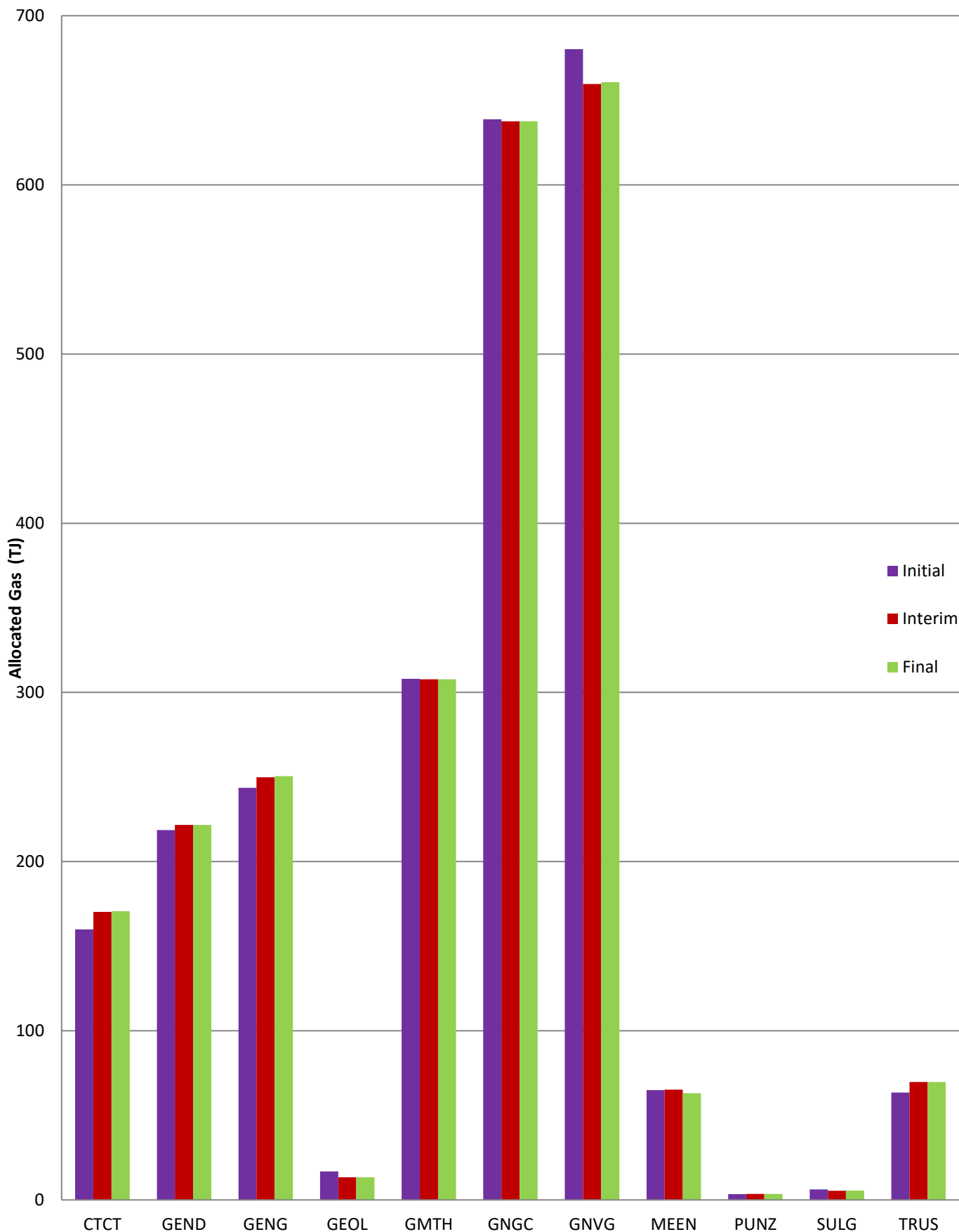
## 5. Allocation Aggregated Results

There were 12 gas retailers who were allocated gas across the **INITIAL**, **INTERIM** and **FINAL** allocations as indicated below.



## 6. Final Allocation Period

Change in allocated gas by retailer for the **APRIL 2017** allocation period

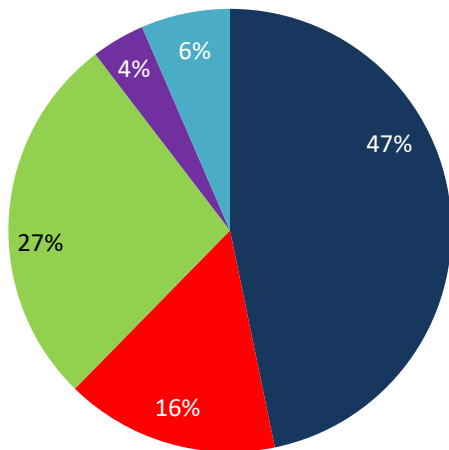


## 7. Service Provider Performance

### 7.1. EMS GAA Compliance Performance

Allocation System Performance	Metric	Status
All sampled transactions must have a response time of less than 30 seconds	Average 0.91 seconds	✓
Number of transactions with response time greater than 30 seconds	nil	✓
99% of all sampled transactions must have a response time of less than 4 seconds	Achieved	✓
95% of all sampled transactions must have a response time of less than 2 seconds	Achieved	✓
The System must upload any one consumption file in less than 30 seconds	Achieved	✓
Average concurrent (simultaneous) sessions across month:	0.004	✓
Max (non-concurrent) sessions in a single hour	6	✓
Record number and details of service provider breaches	0	✓
Record number and details of retailer breaches	0	✓
System availability (must not be unavailable for >90 mins per month)	99.95% available [server reboot for a patch required]	✓
System back-up requirements met	Achieved	✓
System DB size	64.9 GB [no change]	
System Security Breaches	Nil	✓

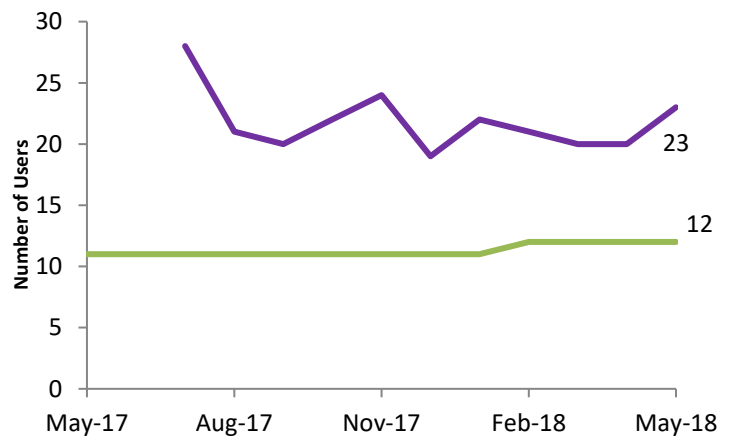
### 7.2. Browser Access for May 2018



■ Chrome ■ Safari ■ Internet Explorer ■ Firefox ■ Edge

### 7.3. Gas Retailers

The graph below indicates the number of active portal users and the number of Gas Retailers in the last 12 months.



— Number of Active Portal Users this month

— Number of Gas Retailers